



MITAC DIGITAL TECHNOLOGY CORP.

Empowering Tomorrow with Edge AI

4K
Resolution

5G



MITAC Video Telematics Solution

360° connected AI camera solution



A Connected CDR B DMS Cam C BSIS Cam D Rear Cam E Smart dongle F Manual Event Button G Navigation H Display



K220

Always connected

- Built-in 4G LTE Cat.6 & dual-band WIFI
- Bluetooth® 4.2 BLE

Reliable and flexible platform

- Qualcomm® Octa-core & Android™ 10.0
- Open APIs & SDK for seamless integration

Track your fleets in real-time

- Comprehensive GNSS/3-axis G-sensor/Gyro sensor support

Get the full picture of your vehicles

- All video footage are safely stored
- Enhanced ADAS and DMS function

K145C/K245C

Always connected

- Built-in 4G LTE Cat.6 & dual-band WIFI
- Bluetooth® 4.2 BLE, NFC / HF RFID

Reliable and flexible platform

- Qualcomm® Octa-core & Android™ 9.0
- Open APIs & SDK for seamless integration

Track your fleets in real-time

- Comprehensive GNSS/3-axis G-sensor/Gyro sensor support

Get the full picture of your vehicles

- All video footage are safely stored
- Enhanced ADAS and DMS function

Multiple Certifications

- Carrier certification by Telstra, Rogers, Telus, T-Mobile, Verizon, AT&T and FirstNET



K165/K265

Always connected

- Built-in 4G LTE Cat.4 & dual-band WIFI, 5G RedCap by request
- Bluetooth® 5.0 BLE, NFC / HF RFID

Reliable and flexible platform

- Qualcomm® Octa-core & Android™ 10
- Open APIs & SDK for seamless integration

Dual SD card slots

- Options for dual SD card recording under multi-channel operation

Track your fleets in real-time

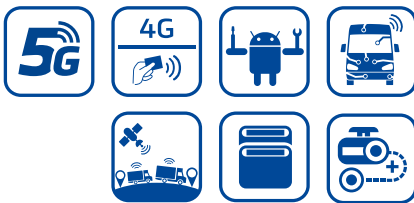
- Comprehensive GNSS/3-axis G-sensor/Gyro sensor support

Get the full picture of your vehicles

- All video footage are safely stored
- Embed powerful AI

Expandable channels

- Expand up to 7 extra cameras



F840

Reliable and flexible platform

- Qualcomm® Octa-core & Android™ 13.0, Google Mobile service certified

Doubled down on power management

- Smart power mode providing monitor battery health in real-time

All new multi-channel video telematics cradle

- Multi-channel video cradle supported four-channel TVI cameras

Robust design for tough environments

- IP54 and follow industrial automotive SAE-J1455 standard

A Complete Solution To Fulfill All Your Needs



Cost-effective
Drive wider penetration



Fast Time to Market
Launch in under 3 months



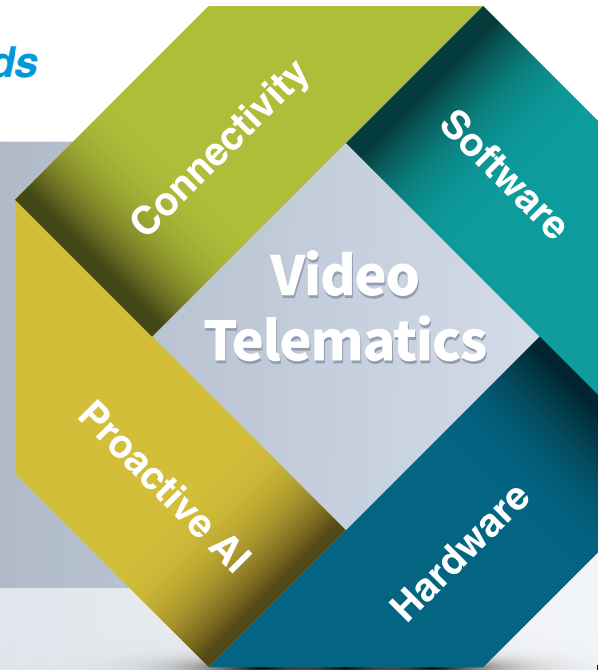
Easy Integration
Augment existing solutions with video



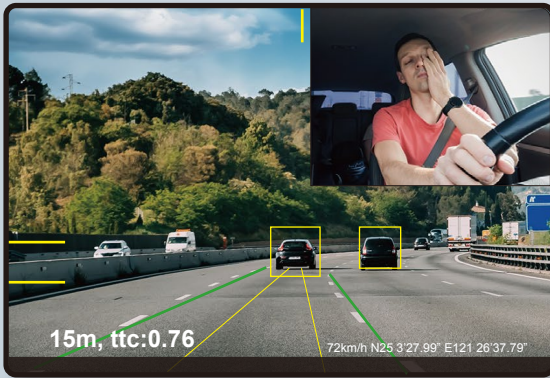
Customer Support
Technical support by ticketing system



AI Based Real-time Alerts
Help fleets get better ROI



Advanced AI - Embedded Video Telematics Solution



ADAS



Forward collision warning



Lane drift



Pedestrian detection



Post speeding profile



Tailgating



STOP signs

DMS



Driver distraction



Face ID



Driver drowsiness



Cellphone / smoking / drinking



Seat belt detection

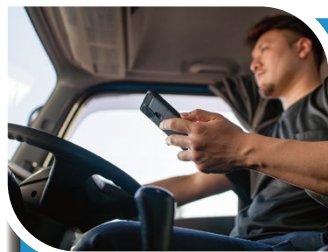


Lens covered

- **Real-time location monitoring:**
Track vehicle dynamics through GPS to improve dispatch efficiency cost-effective: Optimize route planning to save fuel and time
- **Cost-effective:**
Optimize route planning to save fuel and time
- **Vehicle health management:**
Regular maintenance reminders to reduce the risk of failure
- **Data report analysis:**
Operational data is clear at a glance to assist corporate decision-making
- **Driving safety monitoring:**
Driving behavior analysis to reduce accident risk



Protects the fleet and driver with on-demand video



Detects risky-driving and alerts drivers in real-time



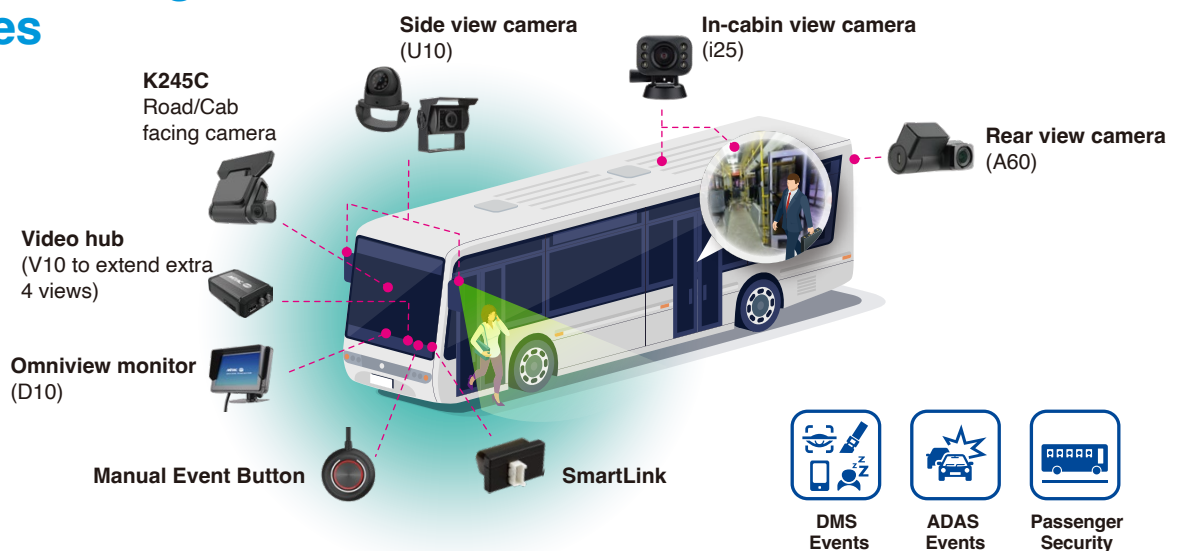
Improves driver engagement through coaching and recognition

Van

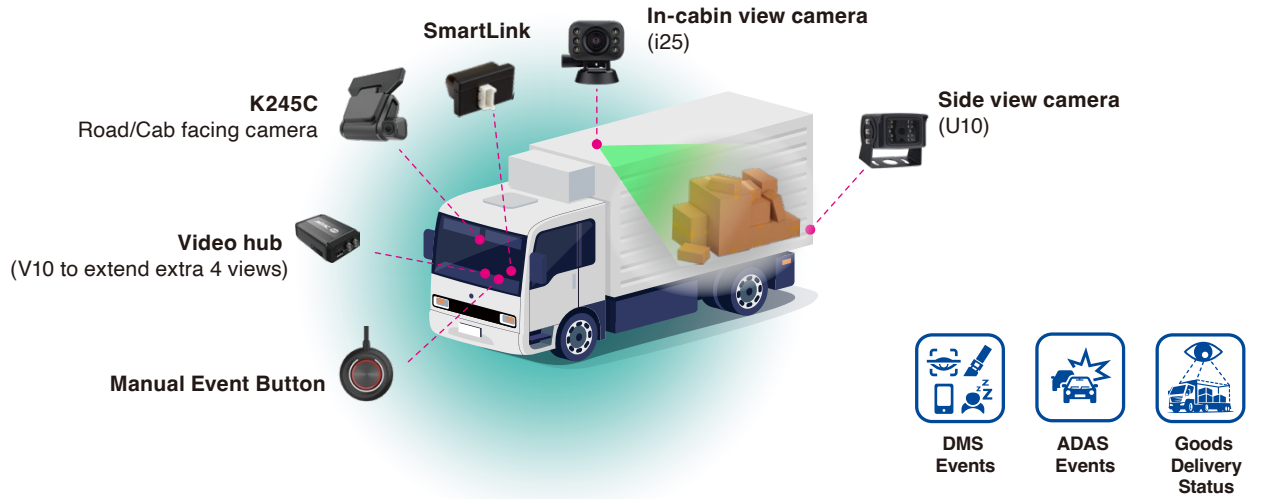


Diversified Offerings Tailored to Cross A Wide Range of Vehicle Segments

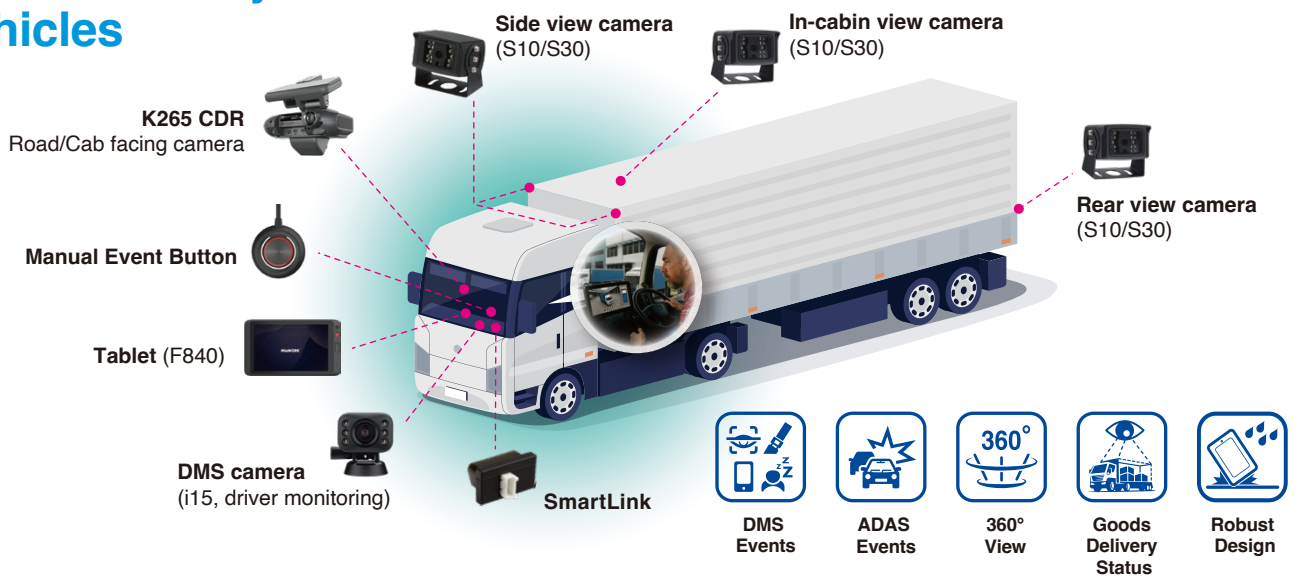
Bus & Passenger Vehicles



Truck & Medium Vehicles



Trailer & Heavy Vehicles





Driving Safety



Data Security



MITAC 
MITAC DIGITAL TECHNOLOGY CORP.

www.mitacmdt.com

© 2026 MITAC Digital Technology Corp. All rights reserved. All other trademarks are the property of their respective owners. All specifications are subject to change without prior notice.